



# First Response Training



**A one day program combining theory, practical exercises  
and simulated emergency scenarios.**

## TESTIMONIAL

*"A great example of training that is interesting and invigorating. Refresher training can become routine. The way you set up the morning and had us practice the various aspects of rescue with the digital aids was fun and helped us improve our technique.*

*The staged 'life like' scenario simulating the unpredictability of an emergency situation was challenging ..and has very much imprinted the learning.*

*I will never forget it and feel I can transfer the learnings to better respond to any other kind of real emergency."*

Cécile Allen  
Training & Development Consultant  
AusNet Services

## INTRODUCTION

Thomson Bridge is a Registered Training Organisation (RTO) delivering tailored training to the energy, utilities, traction and mining industries across Australia.

We currently hold 14 Qualifications and 70 nationally accredited Units of Competency on scope.

## FIRST RESPONSE

This Course is designed to hone your response skills in an emergency situation at your work place.

## APPLICATION AND RELEVANCE

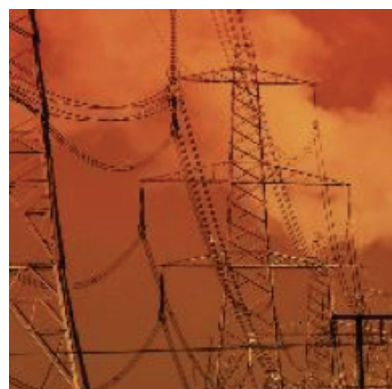
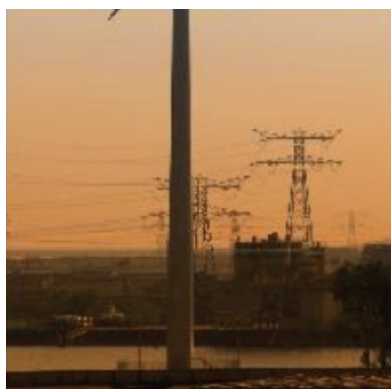
This Course covers key annual refresher units required for workers in the electrical supply industry including CPR, Fire Extinguisher, Manual Handling and LV rescue.

The day includes theory, practical exercises and assessments. Participants will be guided through simulated interactive events to test their skills and knowledge.

## INTERNATIONALLY ACCLAIMED TRAINING TOOLS

We use the digital fire training system, called BullsEye, designed for site based training by Haagen, the global leaders in fire extinguisher and emergency response training hardware.

We also deploy Laedal's leading resuscitation dummy and defibrillator system which provides immediate digital interactive reporting, allowing you to assess your technique and effectiveness.





## ASSESSMENT METHODS

Participants undertake progressive assessment throughout the day, including demonstration of practical skills and responses to written questions relating to underpinning knowledge.

## STATEMENT OF ATTAINMENT

On successful completion of this Course, participants will be issued with a Statement of Attainment for the following nationally recognised units of competency.

- **CPPFES2005A-**  
Demonstrate first attack firefighting equipment
- **HLTAID001-**  
Provide cardiopulmonary resuscitation
- **MEM11011B -**  
Undertake manual handling
- **UETTDRRF06B -**  
Perform rescue from a live LV panel

## TAILORED COURSES

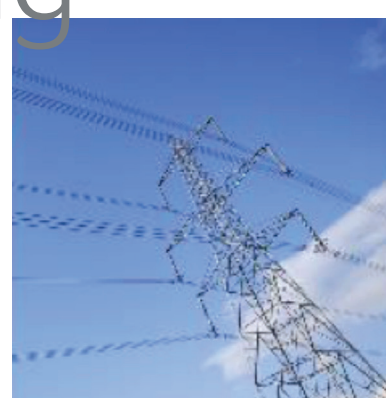
The training program can be customised to include other Units of Competency and content that aligns with your Organisation's requirements and environment.

## CLOTHING

Standard PPE (shirt, trousers, boots)  
or suitable clothing for practical exercises.



# First Response Training



## ABOUT US

Our training team all hold Certificate IV in Training and Assessment and bring considerable hands on knowledge and experience across the generation, transmission, distribution, traction, mining industries.

## AVAILABILITY & LOCATION

Courses are provided on demand.

We deliver training at your site or at our approved training locations.

Commencing 8:00am and finishing at 4:00pm.

## COST

The cost per person is \$300 excluding GST.

Minimum 8 and maximum 12 attendees.

## OUR GOAL

We aim to deliver this important compliance training in a time efficient and cost effective basis, whilst also providing the participant with a stimulating environment in which to refresh these core competencies.



### Further Information

For more information about compliance safety training or our programs in High Voltage Switching services please contact:

#### **Thomson Bridge Pty Ltd**

RTO No. 40754

Phone 1300 15 66 85

Email [info@thomsonbridge.com](mailto:info@thomsonbridge.com)

Web [www.thomsonbridge.com](http://www.thomsonbridge.com)